

~~TOP SECRET~~

PHOTOGRAPHIC INTERPRETATION REPORT



KH-4 MISSION 1042-1
17-22 JUNE 1967

TCS-80400/67
JUNE 1967
COPY 202
42 PAGES

handle via **TALENT-KEYHOLE** control only

GROUP 1 EXCLUDED FROM
AUTOMATIC DOWNGRADING
AND DECLASSIFICATION

~~TOP SECRET~~

WARNING

This document contains information affecting the national security of the United States within the meaning of the espionage laws U. S. Code Title 18, Sections 793 and 794. The law prohibits its transmission or the revelation of its contents in any manner to an unauthorized person, as well as its use in any manner prejudicial to the safety or interest of the United States or for the benefit of any foreign government to the detriment of the United States. It is to be seen only by personnel especially indoctrinated and authorized to receive information in the designated control channels. Its security must be maintained in accordance with regulations pertaining to TALENT-KEYHOLE Control System.

TARGET CATEGORIES

1. GUIDED MISSILES *
 - A. ICBM Deployment
 - B. IRBM and MRBM (including search areas)
 - C. Research and Development (including space)
 - D. Production Facilities (including test)
 - E. Suspect Missile (Search area or undetermined activity)
 - F.
 - G. Naval Launched Missiles
 - H. Anti-Missile Missile
 - I. SAM Sites
 - J. Short Range Surface-to-surface Missiles
 - K. Missile support/storage areas
 - L. SAM Training Complexes
 2. AIRCRAFT
 - A. Long Range Bases
 - B. Production Facilities (including R and D)
 - C. Airfields
 3. NUCLEAR ENERGY
 - A. Test Area
 - B. Production
 - C. Stockpiles
 - D. Research Institutes
 - E. Suspect Activity
 4. NAVAL ACTIVITY
 - A. Operating Bases
 - B. Production Yards
 - C. Commercial Ports
 - D. Locks and Canals
 5. BIOLOGICAL/CHEMICAL WARFARE
 - A. BW/CW Test Areas (including test)
 - B. Production
 - C. Storage
 - D. Research Institutes
 - E. Suspect Activity
 6. ELECTRONICS
 - A. Missile Tracking Facilities
 - B. Electronics (general)
 7. MILITARY
 - A. Military Installations
 - B. Special Areas
 - C.
 - D. Landing Beaches
 - E.
 - F.
 - G. Tactical SSM Support Facilities
 - B. URBAN/INDUSTRIAL
 - A. Complexes
 - B. Industrial Plants
 - C. Geodetic Control Points
 9. OTHER
 - A. Unidentified Installations
- * Digits in these numbers indicate specific target complexes. A suffix identifies individual components within the complex.

KH-4 MISSION 1042-1, 17-22 JUN 67

PREFACE

THIS IS THE ONLY OAK REPORT ON MISSION 1042-1 COVERING THE HIGHEST PRIORITY TARGETS NOT REPORTED IN THE FORTHCOMING MIDDLE EAST EDITION (TCS-80401/67) OR THE SOUTH CHINA/NORTH VIETNAM EDITION (TCS-80402/67).

TARGETS ARE ARRANGED IN THE OAK BY SUBJECT AND WITHIN EACH SUBJECT BY COMOR TARGET NUMBER. TARGETS OF OPPORTUNITY OBSERVED DURING THE OAK REPORTING PERIOD ARE LISTED NUMERICALLY UNDER THE APPROPRIATE SUBJECT AFTER THE LISTING OF COMOR TARGETS. LOCATIONS OF TARGETS IN THIS REPORT ARE INDICATED BY THE COUNTRY CODE PRECEDING THE COORDINATES.

SELECTED PHOTOGRAPHIC REFERENCES FOLLOW THE DESCRIPTION OF THE TARGET. PASS NUMBERS ARE SUFFIXED WITH EITHER AN A FOR ASCENDING (SOUTH-TO-NORTH), D FOR DESCENDING (NORTH-TO-SOUTH) OR M FOR A MIXED ASCENDING AND DESCENDING PASS. THE LETTER F PRECEDING FRAME NUMBERS INDICATES THE FORWARD CAMERA, AND THE LETTER A INDICATES THE AFT CAMERA. UNIVERSAL REFERENCE GRID COORDINATES ARE GIVEN IN PARENTHESIS AFTER THE FRAME NUMBER TO WHICH THEY APPLY. THIS GRID IS UNIVERSAL GRID NO 1, FEB 64. SYMBOLS FOR CONDITIONS AFFECTING INTERPRETABILITY ARE -- C (CLEAR), SC (SCATTERED CLOUD COVER), HC (HEAVY CLOUD COVER), H (HAZE), CS (CLOUD SHADOW), S (SNOW), O (OBLIQUITY), SD (SEMIDARKNESS), D (DARKNESS), GC (GROUND COVER), CF (CAMOUFLAGE), GR (GROUND RESOLUTION), AND SS (SMALL SCALE).

INTERPRETABILITY OF THE PHOTOGRAPHY IS CATEGORIZED AS G (GOOD), F (FAIR), OR P (POOR). THE EXTENT OF PHOTOGRAPHIC COVERAGE IS DENOTED BY THE SYMBOLS T (TOTAL) OR PT (PARTIAL). THE MODE OF COVERAGE IS INDICATED BY ST (STEREO), NS (NON-STEREO), OR PS (PARTIAL STEREO).

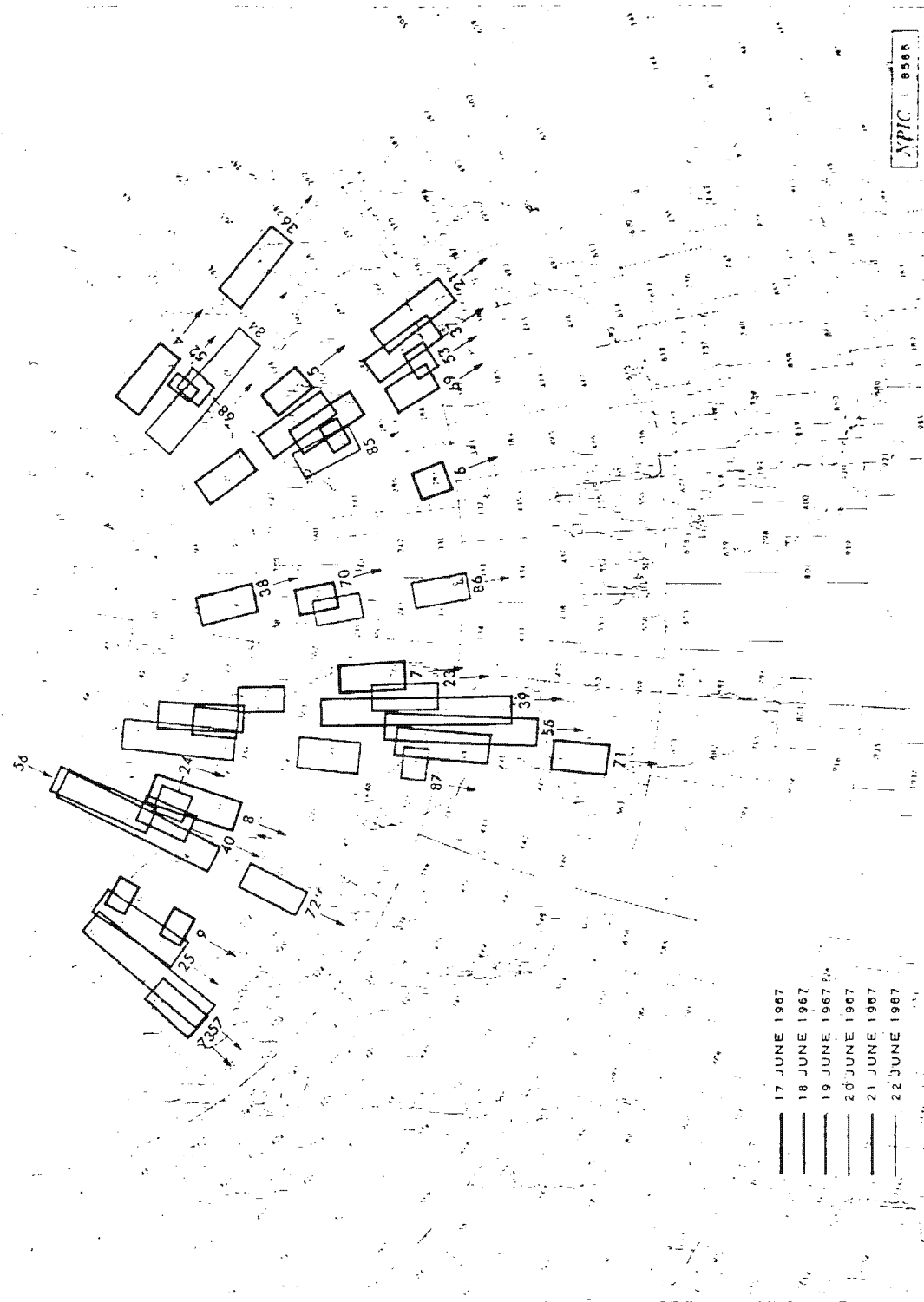
RECIPIENTS ARE CAUTIONED THAT THE INITIAL SCAN OF THE PHOTOGRAPHY IS BEING ACCOMPLISHED IN A SHORT TIME AND PRIOR TO FINAL REFINEMENT OF EPHEMERIS DATA. CONSEQUENTLY, FUTURE DETAILED ANALYSIS MAY RESULT IN ADDITIONAL INFORMATION. MOREOVER, RECIPIENTS ARE CAUTIONED THAT THE IDENTIFICATION OF TARGETS IS BASED PRIMARILY ON PHOTOGRAPHY AND DOES NOT CONSTITUTE A FINISHED INTELLIGENCE JUDGMENT.

Handle Via
TALENT-KEYHOLE
Control System Only

~~TOP SECRET CHESS RUFF~~

TCS-80400/67

KH-4 MISSION 1042-1, 17-22 JUNE 1967



~~TOP SECRET CHESS RUFF~~

Handle Via
TALENT-KEYHOLE
Control System Only

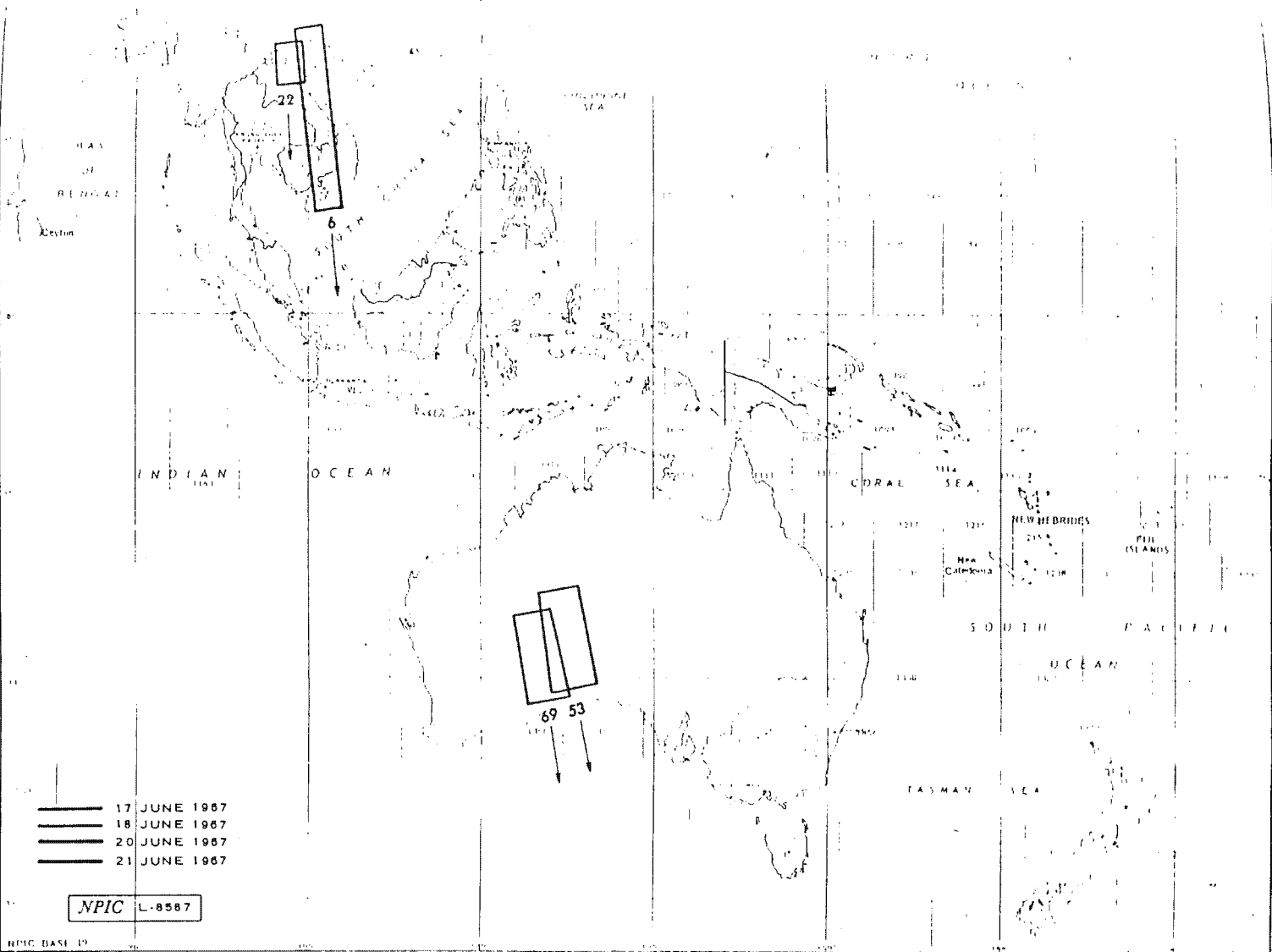
Handle Via
Talent Keyhole
Control System Only

Approved for Release: 2019/01/11 C05105860

~~TOP SECRET CHESS RUFF~~

KH-4 MISSION 1042-1, 17-22 JUNE 1967

TCS 80400/67



APPROXIMATE COVERAGE OF KH-4 MISSION 1042-1, 17-22 JUNE 1967 OVER AUSTRALASIA.

5

~~TOP SECRET CHESS RUFF~~

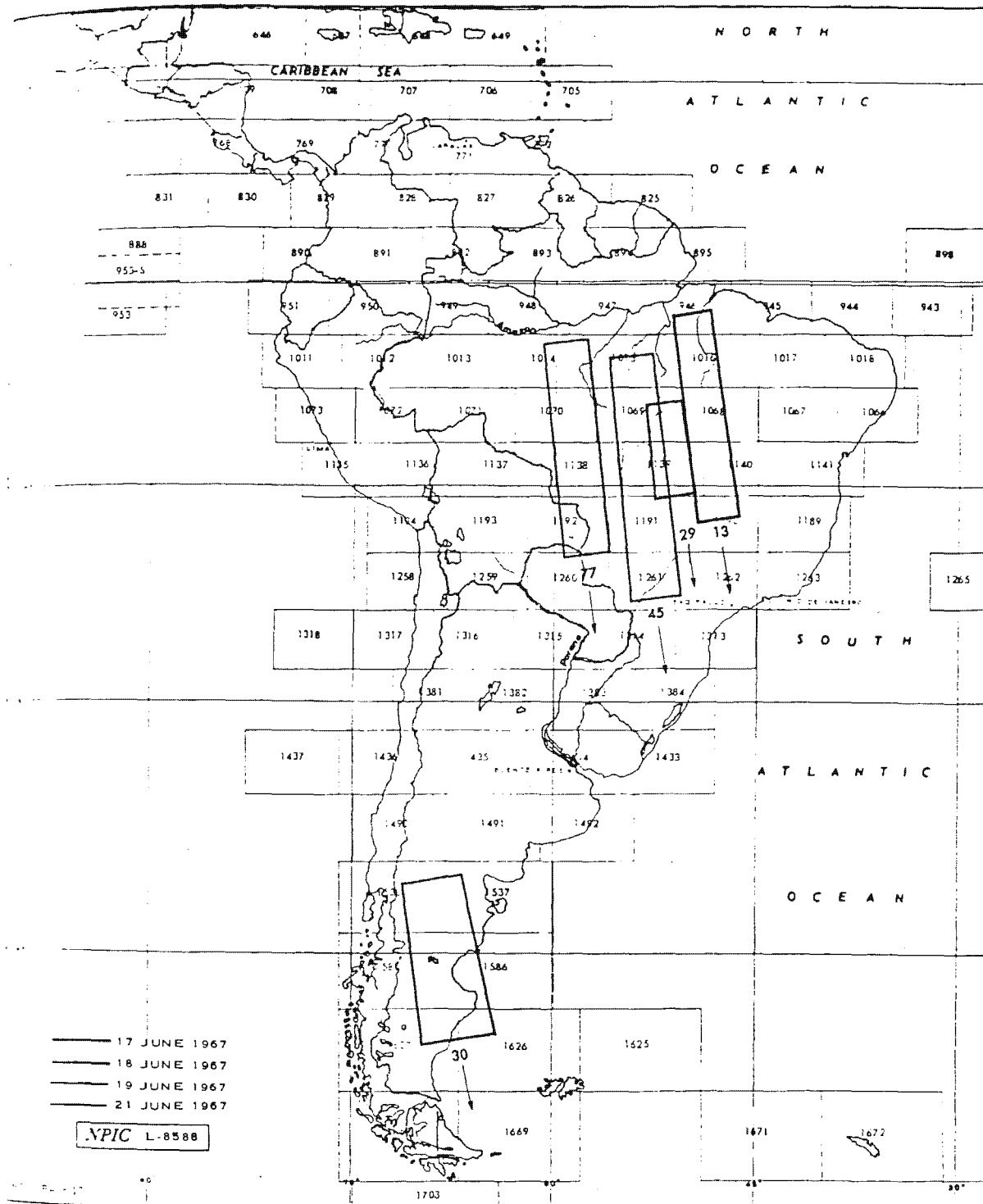
Handle Via
Talent Keyhole
Control System Only

Approved for Release: 2019/01/11 C05105860

~~TOP SECRET CHESS RUFF~~

Handle Via
TALENT-KEYHOLE
Control System Only

KH-4 MISSION 1042-1, 17-22 JUNE 1967



APPROXIMATE COVERAGE OF KH-4 MISSION 1042-1, 17-22 JUNE 1967 OVER SOUTH AMERICA.

~~TOP SECRET CHESS RUFF~~

Handle Via
TALENT-KEYHOLE
Control System Only

Highlights

~~TOP SECRET CHESS RUFF~~Handle Via
Talent-Keyhole
Control System Only

TCS-80400/67

KH-4 MISSION 1042-1, 17-22 JUN 67

HIGHLIGHTS

NINE OF THE 24 DEPLOYED ICBM COMPLEXES ARE COVERED ON THIS MISSION. KOSTROMA AND YURYA ARE COMPLETELY COVERED ON CLEAR PHOTOGRAPHY. DROVYANAYA, IMENI GASTELLO, OLOVYANNAYA, TATISHCHEVO, REYKOV, UZHUR, AND YOSHKAR-DLA ARE OBSERVED THROUGH SCATTERED-TO-HEAVY CLOUDS. SIX TYPE IIID SITES ARE NEWLY IDENTIFIED. FIVE SITES, INCLUDING A CONTROL SITE, ARE IDENTIFIED AT OLOVYANNAYA. THESE SITES CONFIRM THE EXISTANCE OF THE NINTH GROUP AT THIS COMPLEX. SUPPORT BUILDINGS FOR THE CONTROL SITE WERE APPARENT IN JAN 67. HOWEVER, THE FIRST EVIDENCE OF A SITE IS ON THIS MISSION. AT KOSTROMA, A POSSIBLE SITE IS IDENTIFIED AT THE TRANSFER POINT.

THE CURRENT NUMBER OF ICBM LAUNCHERS AT THE 24 KNOWN DEPLOYED COMPLEXES (THE FIGURES SHOWN IN PARENTHESIS INDICATE THE NUMBER OF POSSIBLE LAUNCHERS AND ARE NOT INCLUDED IN THE TOTALS) IS AS FOLLOWS --

| | |
|-----------------|---------|
| TYPE IIIC | 177 (1) |
| TYPE IIID | 507 (4) |
| SUBTOTAL | 684 (5) |
| OTHER LAUNCHERS | 209 |
| TOTAL | 893 (5) |

2. THE PLESETSK MISSILE AND SPACE CENTER IS IMAGED ON 3 PASSES OF PHOTOGRAPHY ON 19, 20, AND 21 JUNE. NO NEW LAUNCH FACILITIES ARE IDENTIFIED.

3. PORTIONS OF THE KAPUSTIN YAR/VLADIMIROVKA MISSILE TEST CENTER INCLUDING THE SAM COMPLEX, LAUNCH COMPLEXES C, D, G, AND H, AND THE AKHTUBINSK/VLADIMIROVKA AIRFIELD ARE VISIBLE ON 21 JUNE THROUGH SCATTERED-TO-HEAVY CLOUDS. MISSILE EXERCISES ARE OBSERVED AT LAUNCH AREAS 1C, 2C, 3C, AND 4C AND THE 2 UNIDENTIFIED OBJECTS REMAIN ON THE PADS AT COMPLEX H. AN AERODYNAMIC VEHICLE IS OBSERVED ON A LAUNCHER AT LAUNCH AREA 3D.

4. THE SARY-SHAGAN ANTIMISSILE TEST CENTER IS COVERED ON CLEAR PHOTOGRAPHY. THE RADAR SCREEN UNDER CONSTRUCTION AT HEN ROOST ANTENNA NORTH, SARY-SHAGAN R&D RADAR FACILITY 2, HAS BEEN EXTENDED FROM 300 FEET IN LENGTH IN APRIL 67 TO 450 FEET AS OF 19 JUNE 67.

5. TWO PROBABLE LONG RANGE SAM LAUNCH COMPLEXES ARE NEWLY IDENTIFIED AT KALININGRAD (54-40N 021-01E) AND VENTSPILS (57-16N 021-28E), USSR. KALININGRAD IS IN AN EARLY-TO-MID STAGE OF CONSTRUCTION WHILE VENTSPILS IS IN AN EARLY STAGE OF CONSTRUCTION.

~~TOP SECRET CHESS RUFF~~Handle Via
Talent-Keyhole
Control System Only

~~TOP SECRET CHESH RUFF~~Handle Via
Talent Keyhole
Control System Only

TCS-80400/67

KH-4 MISSION 1042-1, 17-22 JUN 67

7. OF THE 32 PREVIOUSLY KNOWN PLRS COMPLEXES, 10 ARE OBSERVED ON THIS MISSION UNDER VARIOUS WEATHER CONDITIONS. THEY INCLUDE KRESSAARE, KAPUSTIN YAR, PLESETSK, TALLINN, CHEREPOVETS, KUPAJA, MURASHI, KOSTROMA, AND SARY-SHAGAN 1 AND 2.

8. THE SHUANG-CHENG-TZU MISSILE TEST CENTER, CHINA, WITH THE EXCEPTION OF THE AIRFIELD IS COVERED ON 17 JUNE PHOTOGRAPHY WITH POOR-TO-FAIR INTERPRETABILITY. NO ACTIVITY IS OBSERVED AT THE SSM LAUNCH FACILITIES. UNIDENTIFIED CONSTRUCTION CONTINUES AT SUSPECT SSM TRAINING SITES 3 AND 5, LOCATED 56 NM NORTH AND 88 NM NNE, RESPECTIVELY, OF THE MAIN SUPPORT BASE.

9. AT THE SEMIPALATINSK NUCLEAR WEAPONS PROVING GROUND, USSR, THE UNDERGROUND TEST FACILITIES AND KONYSTAN TEST AREA ARE COVERED ON OBLIQUE PHOTOGRAPHY OF FAIR INTERPRETABILITY. THE POSSIBLE UNDERGROUND TEST AREA IS IDENTIFIABLE ONLY AT THE FRAME EDGE. APPROXIMATELY 95 PERCENT OF THE SHOT GROUND IS COVERED BY HEAVY CLOUDS AND HAZE. THE MAIN SUPPORT AREA AND SHAGAN RIVER TEST SITE ARE NOT COVERED. NO NEW CRATERS OR PREPARATIONS FOR TESTS NOT PREVIOUSLY REPORTED ARE VISIBLE IN THE AREAS COVERED.

10. THIS IS THE FIRST COVERAGE OF THE LOP NOR NUCLEAR TEST SITE, CHINA, 5 DAYS AFTER THE 17 JUNE 67 TEST (CHIC 6). SOME EFFECTS OF THE TEST ARE VISIBLE ON THE GROUND. ALL PARTS OF THE AIRDROP MARKER ARE LESS DISTINCT AND THE T-SIGNS NORTH AND SOUTH OF GZ-2 HAVE BEEN OBLITERATED. A PRONOUNCED LIGHT-TONED AREA CENTERED APPROXIMATELY 1,900 FEET SOUTH OF GZ-2 IS VISIBLE.

11. TWO TROPOSCATTER FACILITIES AND A TALL KING-AW RADAR FACILITY ARE NEWLY IDENTIFIED. THE FIRST TROPOSCATTER FACILITY IS LOCATED 21 NM NE OF ARANTUR AT 61-10N 064-00E AND THE OTHER IS LOCATED 9 NM SOUTH OF TATARSKOYE AT 64-36N 087-40E. THE TALL KING FACILITY IS LOCATED 19 NM SE OF KOTLAS AT 60-59N 046-57E.

12. THE SOVIET BUILDUP AT CHOYBALSAN, MONGOLIA, PREVIOUSLY REPORTED ON MISSION 4037, MAY 67, CONTINUES TO SHOW A HIGH LEVEL OF ACTIVITY. A PROBABLE AIRFIELD IS UNDER CONSTRUCTION EAST OF THE COMPLEX AND A NEW TENT CAMP AND MOTOR PARK ARE OBSERVED JUST WEST OF CHOYBALSAN.

STATUS OF TARGET READOUT

THIS OAK REPORTS ON 53 COMOR TARGETS AND 6 BONUS TARGETS.

TABULAR SUMMARY

~~TOP SECRET CHESH RUFF~~Handle Via
Talent-Keyhole
Control System Only

Handle Via
TALENT-KEYHOLE
Control System Only

~~TOP SECRET CHESS RUFF~~

TCS-80400/67

KH-4 MISSION 1042-1, 17-22 JUN 67

A RECAPITULATION OF SIGNIFICANT ACTIVITY OBSERVED ON THIS MISSION AND NPIC CURRENT MISSILE LISTINGS IS PRESENTED IN THE FOLLOWING TABLES ON SUCCEEDING PAGES --

- TABLE 1 -- SOVIET ICBM DEPLOYMENT
- TABLE 2 -- SOVIET MRBM AND IRBM DEPLOYMENT
- TABLE 3 -- SAM AND ABM DEPLOYMENT
- TABLE 4 -- DEPLOYED PROBABLE LONG RANGE SAM COMPLEXES
- TABLE 5 -- DATE/TIME OF PHOTOGRAPHIC PASSES

~~TOP SECRET CHESS RUFF~~

Handle Via
TALENT-KEYHOLE
Control System Only

Handle Via
Talent Keyhole
Control System Only

~~TOP SECRET CHESS RUFF~~

TCS-80400/67

KH-4 MISSION 1042-1, 17-22 JUNE 1967

TABLE 1. DEPLOYED ICBM COMPLEXES, TYURATAM MTC AND PLESETSK MSC

| COMPLEX | TYPE II | | TYPE III | | TYPE III C | | TYPE III D | | New Positions This Mission | | Total Launch Positions | Launch Groups Identified | | Estimated Start of Latest Group |
|------------------|----------------|----------|----------------|----------|----------------|----------|----------------|----------|----------------------------|-----|--|--------------------------|-----|---------------------------------|
| | A-D | | A-B | | Silo Launchers | | Complete | | IIC IID | | | I-Electronic Facilities | | |
| | Silo Launchers | Complete | Silo Launchers | Complete | Silo Launchers | Complete | Silo Launchers | Complete | IIC | IID | | IIC | IID | |
| ALEYSK | | | | | 19 | 6 | | | | | 19 | 3 | | Jul 66 |
| DOMBAROVSKIY | | | | | 37 | 12 | | | | | 37 | 6 | | Dec 66 |
| DROVYANAYA | 3 | | 3 | | | | 51 | 34 | | | 66 | | 5 | Jun 66 |
| GLADKAYA | 2 | | 1 | | | | 61 | 50 | | | 68 | | 6 | Mar 66 |
| IMENI GASTELLO | | | | | 25 | 17 | | | | | 25 | 4 | | Jun 66 |
| ITATKA | 3 | | | | | | | | | | 6 | | | |
| KARTALY | | | | | 29 | 12 | | | | | 29 | 5 | | Dec 66 |
| KOSTROMA | 6 | | 1 | | | | 30(1#) | | (1#) | | 45(1#) | | 3 | Feb 67 |
| KOZELSK | 3 | | 2 | | | | 40 | 3 | | | 52 | | 4 | Feb 67 |
| NOVOSIBIRSK | 3 | | 2 | | | | | | | | 12 | | | |
| OLOVYANNAYA | | | 3 | | | | 86 | 38 | | 5 | 95 | | 9 | Dec 66 |
| OMSK | | | 1 | | | | | | | | 3 | | | |
| PERM | 5 | | 1 | | | | 41 | 40 | | | 54 | | 4 | Apr 66 |
| SHADRINSK | | | 3 | | | | | | | | 9 | | | |
| SVOBODNYI | 7 | | 1 | | | | 49(1#) | | | | 66(1#) | | 5 | Jan 67 |
| TATISHCHEVO | | | | | | | 111(1#) | 49 | | | 111(1#) | | 11 | Jul 66 |
| TEYKOVO | 6 | | | | | | | | | | 12 | | | |
| TYUMEN | 2 | | | | | | | | | | 4 | | | |
| UZHUR | | | | | 42(1#) | 18 | | | | | 42(1#) | 7 | | Jan 67 |
| VERKHNYAYA SALDA | 7 | | 2 | | | | | | | | 20 | | | |
| YEDROVO | 6 | | 2 | | | | 38 (1#) | 1 | | | 56(1#) | | 4 | Feb 67 |
| YOSHKAR-OLA | 6 | | | | | | | | | | 12 | | | |
| YURYA | 8 | | 3 | | | | | | | | 25 | | | |
| ZHANGIZ-TOBE | | | | | 25 | 12 | | | | | 25 | 4 | | Aug 66 |
| TOTALS* | 67 | | 25 | | 177(1#) | 77 | 507(4#) | 215 | | 6 | 893(5#) | 29 | 51 | |
| TYURATAM MTC | 2 | | 3 | | 9 | 6 | 11 | 11 | | | 60 total launchers includes 6 other single silos and 17 SSM R&D/Space Launch Positions | | | |
| PLESETSK MSC | 4 | | 1 | | | | | | | | 39 total SSM Launch Positions -- includes 6 Type I, 9 other Type II, 10 other Type III, and 1 E-1 (site 12). | | | |

* Covered This Mission (#) Possible The Possible Sites Are Not Included In The Total Count

~~TOP SECRET CHESS RUFF~~

Handle Via
Talent Keyhole
Control System Only

Handle Via
TALENT-KEYHOLE
Control System Only

~~TOP SECRET CHESS RUFF~~

TCS-80400/67

KH-4 MISSION 1042-1, 17-22 JUNE 1967

TABLE 2. SOVIET MRBM AND IRBM DEPLOYMENT

| Geographic Area | Soft MRBM Launch Areas | Soft IRBM Launch Areas | Hard MRBM Launch Areas | Hard IRBM Launch Areas | Total Launch Areas | Total Launch Positions |
|-----------------|------------------------|------------------------|------------------------|------------------------|--------------------|------------------------|
| Western | 118 | 9 | 18 | 10 | 155 | 608 |
| Caucasus | 3 | | 2 | 3 | 8 | 29 |
| Central Asia | 2 | 2 | 1 | 3 | 8 | 29 |
| Far Eastern | 9 | 1 | | 1 | 11 | 43 |
| Totals | 132 | 12 | 21 | 17 | 182 | 709 |

Totals do not include 100 fixed field-type sites with total of 374 launch positions and one launch facility at Sovetskaya Gavan

TABLE 3. SAM AND ABM DEPLOYMENT

| | Country | | | | | | | | | | | | | | Totals*** | | | | | | | |
|-----------------------------|---------|---------|----------|----------------|--------------|---------|--------|---------|------------|-------|----------|-------------|-----------|-------|-----------|----|------|-------|---------------|-------------|--------------|-----------|
| | USSR | Albania | Bulgaria | Czechoslovakia | East Germany | Hungary | Poland | Rumania | Yugoslavia | China | Mongolia | North Korea | Indonesia | Egypt | | | Cuba | India | North Vietnam | Afghanistan | | |
| SA-1 | 56 | | | | | | | | | | | | | | | | | | 56 | Confirmed | | |
| | | | | | | | | | | | | | | | | | | | | | Probable | |
| | | | | | | | | | | | | | | | | | | | | | Possible | |
| | 1 | | | | | | | | | | | | | | | | | | | | Training | |
| AM Sites | 1032 | 2 | 19 | 25 | 54 | 16 | 32 | 18 | 5 | 21 | 2 | 10 | 5 | 35 | 24 | 16 | 168 | 1 | 1487 | Confirmed | | |
| | 2 | | 1 | 1 | | | | | | 1 | | | | | | | 1 | | | | Probable | |
| | | | | | | | | | | | | | | | | | 3 | | | | Possible | |
| | 35 | | 1 | | | | | | | 9 | | | | 1 | 3 | 2 | 1 | 2 | | 54 | Training *** | |
| SA-3 | 110 | | | | | | | | | | | | | | | | | | | 110 | Confirmed | |
| | 1 | | | | | | | | | | | | | | | | | | | | Probable | |
| | | | | | | | 1 | | | | | | | | | | | | | | Possible | |
| | 13 | | | | | | | | | | | | | | | | | | | | Training *** | |
| A-2 SAM Support Facilities | 206 | 1 | 4 | 6 | 4 | 4 | 6 | 2 | 1 | | | 1 | 1 | 5 | 6 | 3 | 1 | | | 251 | Confirmed | |
| | 2 | | 2 | | | | | 1 | | | | | | | | | | | | | 6 | Probable |
| | | | | | | | | | | | | | | | | | | | | | | Possible |
| A-3 SAM Assembly Facilities | 14 | | | | | | | | | | | | | | | | | | | | 14 | Confirmed |
| | 2 | | | | | | | | | | | | | | | | | | | | 2 | Probable |
| | | | | | | | | | | | | | | | | | | | | | | Possible |
| Probable Long Range SAM | 34 | | | | | | | | | | | | | | | | | | | | 34 | Confirmed |
| | | | | | | | | | | | | | | | | | | | | | | Probable |
| | | | | | | | | | | | | | | | | | | | | | | Possible |
| | | | | | | | | | | | | | | | | | | | | | | Suspect |
| ABM Complexes | 7 | | | | | | | | | | | | | | | | | | | | 7 | Confirmed |
| | | | | | | | | | | | | | | | | | | | | | | Probable |
| | | | | | | | | | | | | | | | | | | | | | | Possible |

** does not include alternate sites, USSR

***Total reflects individual sites

** does not include 31 abandoned sites

*Includes 2 Probable R & D or Training sites at SSATC

~~TOP SECRET CHESS RUFF~~

Handle Via
TALENT-KEYHOLE
Control System Only

WARNING

This document contains information affecting the national security of the United States within the meaning of the espionage laws U. S. Code Title 18, Sections 793 and 794. The law prohibits its transmission or the revelation of its contents in any manner to an unauthorized person, as well as its use in any manner prejudicial to the safety or interest of the United States or for the benefit of any foreign government to the detriment of the United States. It is to be seen only by personnel especially indoctrinated and authorized to receive information in the designated control channels. Its security must be maintained in accordance with regulations pertaining to TALENT-KEYHOLE Control System.

TARGET CATEGORIES

1. GUIDED MISSILES *
 - A. ICBM Deployment
 - B. IRBM and MRBM (including search areas)
 - C. Research and Development (including space)
 - D. Production Facilities (including test)
 - E. Suspect Missile (Search area or undetermined activity)
 - F.
 - G. Naval Launched Missiles
 - H. Anti-Missile Missile
 - I. SAM Sites
 - J. Short Range Surface-to-surface Missiles
 - K. Missile support/storage areas
 - L. SAM Training Complexes
 2. AIRCRAFT
 - A. Long Range Bases
 - B. Production Facilities (including R and D)
 - C. Airfields
 3. NUCLEAR ENERGY
 - A. Test Area
 - B. Production
 - C. Stockpiles
 - D. Research Institutes
 - E. Suspect Activity
 4. NAVAL ACTIVITY
 - A. Operating Bases
 - B. Production Yards
 - C. Commercial Ports
 - D. Locks and Canals
 5. BIOLOGICAL/CHEMICAL WARFARE
 - A. BW/CW Test Areas (including test)
 - B. Production
 - C. Storage
 - D. Research Institutes
 - E. Suspect Activity
 6. ELECTRONICS
 - A. Missile Tracking Facilities
 - B. Electronics (general)
 7. MILITARY
 - A. Military Installations
 - B. Special Areas
 - C.
 - D. Landing Beaches
 - E.
 - F.
 - G. Tactical SSM Support Facilities
 8. URBAN/INDUSTRIAL
 - A. Complexes
 - B. Industrial Plants
 - C. Geodetic Control Points
 9. OTHER
 - A. Unidentified Installations
- * Digits in these numbers indicate specific target complexes. A suffix identifies individual components within the complex.

KH-4 MISSION 1042-1, 17-22 JUN 67

TABLE OF CONTENTS

| | |
|----------------------------|----------|
| PREFACE | 2 |
| TRACK OF MISSION | 3 |
| HIGHLIGHTS | 7 |
| MISSILES | 14 |
| AIR FACILITIES | 29 |
| NUCLEAR ENERGY | 30 |
| ELECTRONICS/COMMUNICATIONS | 34 |
| MILITARY ACTIVITY | 36 |
| COMPLEXES | 37 |
| INDEX OF TARGETS | 38 |
| ATTACHMENTS | APPENDIX |

TABLE 4. DEPLOYED PROBABLE LONG RANGE SAM COMPLEXES

| Complex | Sites Positions | Tracking/Guidance Facility No of Positions | Associated Air Warning Facility | Orientation | Complex | Sites Positions | Tracking/Guidance Facility No of Positions | Associated Air Warning Facility | Orientation |
|----------------|--------------------|--|------------------------------------|-------------|-------------------------|--------------------|--|------------------------------------|-------------|
| ANGARSK | 3 | 3 | ✓ | 355° | ★ LIEPAJA | 5 | 5 | ✓ | 244° |
| BABAYEVO | 3 | 3 | | 314° | MOZHAYSK | 3 | 3 | | 285° |
| BORSHCHEV | 1 | | | | ★ MURASHI | 5 | 5 | ✓ Prob | 341° |
| CHELYABINSK | 3 | 3 | | 321° | NEYA | 3 | 3 | | 298° |
| ★ CHEREPOVETS | 5 | 5 | ✓ | 360° | NIZHNIY TAGIL | 3 | 3 | | 360° |
| FEODOSIYA | 3 | 3 | ✓ | 133° | NIZHNYAYA TURA | 3 | 3 | | 208° |
| KALININ | 3 | 3 | | 308° | PERESLAVL- ZALESSKIY | 3 | 3 | ✓ | 323° |
| ★ KALININGRAD | 3 | 3 | | 284° | ★ PLESETSK | 3 | 3 | ✓ | 356° |
| ★ KAPUSTIN YAR | 2 | 2 | | 201° | ★ SARY-SHAGAN 1 | 3 | 3 | ✓ | 113° |
| KHABAROVSK | 3 | 3 | | 85° | ★ SARY-SHAGAN 2 | 2 | 2 | ✓ | 237° |
| KIMRY | 3 | 3 | ✓ | 311° | SHARYA | 2 | 2 | | 295° |
| KIYEV | 3 | 3 | ✓ | 230° | SVERDLOVSK | 3 | 3 | ✓ | 325° |
| ★ KOSTROMA | 3 | 3 | | 337° | ★ TALLINN | 5 | 5 | ✓ | 283° |
| KRASNOYARSK | 3 | 3 | | 36° | TOMSK | 3 | 3 | | 342° |
| ★ KURESSAARE | 3 | 3 | | 280° | ★ VENTSPILS | 3 | 3 | | 208° |
| LENINGRAD NE | 5 | 5 | | 18° | VOLGOGRAD | 3 | 3 | ✓ | 150° |
| LENINGRAD NW | 5 | 5 | | 315° | | | | | |
| LENINGRAD SW | 5 | 5 | | 205° | | | | | |
| | | | | | TOTALS 34 | 111 | 110 | 13+1 Prob | |

★ Covered this mission

* Probable R&D or training associated

✓ Identified at this complex

Handle Via
Talent Keyhole
Control System Only

TOP SECRET CHESS RUFF
KH-4 MISSION 1042-1, 17-22 JUNE 1967

TCS 80400/67

TOP SECRET CHESS RUFF

12

Handle Via
Talent Keyhole
Control System Only

TABLE 5. DATE/TIME OF PHOTOGRAPHIC PASSES

| Pass | Date | Camera ON | | Camera OFF | | Pass | Date | Camera ON | | Camera OFF | |
|--------------|-----------|-----------|--------|------------|--------|--------------|-----------|-----------|--------|------------|--------|
| | | Hr(Z) | Min(Z) | Hr(Z) | Min(Z) | | | Hr(Z) | Min(Z) | Hr(Z) | Min(Z) |
| 4D | 17 Jun 67 | 03 | 32 | 03 | 33 | 52D | 20 Jun 67 | 03 | 32 | 03 | 32 |
| 5D | 17 Jun 67 | 05 | 05 | 05 | 06 | 53D (Part 1) | 20 Jun 67 | 05 | 04 | 05 | 06 |
| 6D (Part 1) | 17 Jun 67 | 06 | 38 | 06 | 39 | 53D (Part 2) | 20 Jun 67 | 05 | 07 | 05 | 08 |
| 6D (Part 2) | 17 Jun 67 | 06 | 43 | 06 | 46 | 53D (Part 3) | 20 Jun 67 | 05 | 23 | 05 | 25 |
| 7D | 17 Jun 67 | 08 | 06 | 08 | 08 | 55D (Part 1) | 20 Jun 67 | 08 | 01 | 08 | 02 |
| 8D | 17 Jun 67 | 09 | 33 | 09 | 35 | 55D (Part 2) | 20 Jun 67 | 08 | 06 | 08 | 10 |
| 9D (Part 1) | 17 Jun 67 | 11 | 04 | 11 | 04 | 56D | 20 Jun 67 | 09 | 29 | 09 | 32 |
| 9D (Part 2) | 17 Jun 67 | 11 | 05 | 11 | 06 | 57D (Part 1) | 20 Jun 67 | 11 | 02 | 11 | 05 |
| 9D (Part 3) | 17 Jun 67 | 11 | 10 | 11 | 12 | 57D (Part 2) | 20 Jun 67 | 11 | 09 | 11 | 10 |
| 9D (Part 4) | 17 Jun 67 | 11 | 18 | 11 | 19 | 57D (Part 3) | 20 Jun 67 | 11 | 19 | 11 | 22 |
| 10D | 17 Jun 67 | 12 | 41 | 12 | 42 | 58D | 20 Jun 67 | 12 | 40 | 12 | 42 |
| 11D | 17 Jun 67 | 14 | 12 | 14 | 12 | 59D | 20 Jun 67 | 14 | 11 | 14 | 12 |
| 13D | 17 Jun 67 | 17 | 19 | 17 | 23 | | | | | | |
| | | | | | | 68D | 21 Jun 67 | 03 | 30 | 03 | 31 |
| 21D | 18 Jun 67 | 05 | 08 | 05 | 10 | 69D (Part 1) | 21 Jun 67 | 05 | 03 | 05 | 04 |
| 22D | 18 Jun 67 | 06 | 43 | 06 | 44 | 69D (Part 2) | 21 Jun 67 | 05 | 05 | 05 | 06 |
| 23D (Part 1) | 18 Jun 67 | 08 | 03 | 08 | 05 | 69D (Part 3) | 21 Jun 67 | 05 | 22 | 05 | 24 |
| 23D (Part 2) | 18 Jun 67 | 08 | 07 | 08 | 09 | 70D | 21 Jun 67 | 06 | 32 | 06 | 33 |
| 24D | 18 Jun 67 | 09 | 33 | 09 | 34 | 71D (Part 1) | 21 Jun 67 | 08 | 00 | 08 | 01 |
| 25D (Part 1) | 18 Jun 67 | 11 | 04 | 11 | 06 | 71D (Part 2) | 21 Jun 67 | 08 | 05 | 08 | 07 |
| 25D (Part 2) | 18 Jun 67 | 11 | 11 | 11 | 13 | 71D (Part 3) | 21 Jun 67 | 08 | 08 | 08 | 10 |
| 26D | 18 Jun 67 | 12 | 43 | 12 | 44 | 72D (Part 1) | 21 Jun 67 | 09 | 28 | 09 | 32 |
| 29D | 18 Jun 67 | 17 | 21 | 17 | 23 | 72D (Part 2) | 21 Jun 67 | 09 | 33 | 09 | 34 |
| 30D | 18 Jun 67 | 18 | 59 | 19 | 01 | 73D | 21 Jun 67 | 11 | 03 | 11 | 04 |
| | | | | | | 74D (Part 1) | 21 Jun 67 | 12 | 37 | 12 | 38 |
| 36D | 19 Jun 67 | 03 | 35 | 03 | 37 | 74D (Part 2) | 21 Jun 67 | 12 | 39 | 12 | 40 |
| 37D (Part 1) | 19 Jun 67 | 05 | 02 | 05 | 04 | 77D | 21 Jun 67 | 17 | 16 | 17 | 20 |
| 37D (Part 2) | 19 Jun 67 | 05 | 04 | 05 | 06 | | | | | | |
| 37D (Part 3) | 19 Jun 67 | 05 | 07 | 05 | 09 | 84D | 22 Jun 67 | 03 | 27 | 03 | 31 |
| 38D | 19 Jun 67 | 06 | 32 | 06 | 33 | 85D | 22 Jun 67 | 05 | 01 | 05 | 02 |
| 39D | 19 Jun 67 | 08 | 05 | 08 | 10 | 86D (Part 1) | 22 Jun 67 | 06 | 30 | 06 | 31 |
| 40D | 19 Jun 67 | 09 | 32 | 09 | 33 | 86D (Part 2) | 22 Jun 67 | 06 | 33 | 06 | 34 |
| 41D | 19 Jun 67 | 11 | 10 | 11 | 11 | 87D (Part 1) | 22 Jun 67 | 07 | 56 | 07 | 59 |
| 45D | 19 Jun 67 | 17 | 19 | 17 | 24 | 87D (Part 2) | 22 Jun 67 | 08 | 01 | 08 | 02 |
| | | | | | | 87D (Part 3) | 22 Jun 67 | 08 | 03 | 08 | 03 |

Handle Via
Talent Keyhole
Control System Only

~~TOP SECRET CHESS RUFF~~
KH-4 MISSION 1042-1, 17-22 JUNE 1967

TCS 80400/67

~~TOP SECRET CHESS RUFF~~

13

Handle Via
Talent Keyhole
Control System Only

KH-4 MISSION 1042-1, 17-22 JUN 67

NO NEW CONSTRUCTION, CHANGES IN FACILITIES, OR
PREVIOUSLY UNREPORTED FEATURES OBSERVED.

72D F/124,125 (73.8-14.6) & A/123 SC,H,CS
P T PS

1.1 PUSTIN YAR SAM LAUNCH COMPLEX

UR 4848N 04545E 1C0001K

THE SAM LAUNCH COMPLEX IS COVERED ON PHOTOGRAPHY WITH
FAIR-TO-POOR INTERPRETABILITY.

PRECISION TRACKING RADAR FACILITY -- UNIDENTIFIED
GROUND SCARRING IS OBSERVED WITHIN THE SECURED FACILITY
ALONG THE SE FENCE LINE. THIS SCARRING WAS NOT
OBSERVED ON MISSION 4037, 25 MAY 67.

NO APPARENT CHANGES IN FACILITIES ARE OBSERVED AT THE
PROBABLE LONG RANGE SAM LAUNCH FACILITY, THE R & D
LAUNCH AREA, THE SA-1 LAUNCH SITE, OR THE SA-2 AND SA-3
LAUNCH AREAS. ALTHOUGH LIMITING CONDITIONS PRECLUDE AN
ACCURATE COUNT AND IDENTIFICATION OF VEHICLES/PIECES OF
EQUIPMENT, THERE DOES NOT APPEAR TO BE ANY INCREASE IN
ACTIVITY.

OPERATIONAL SAM SITE 830-2 -- OCCUPANCY IS
UNDETERMINED.

NO APPARENT CHANGE IS OBSERVED AT THE R & D AND SA-1
YOYO GUIDANCE SITES, THE SAM HOUSING AND SUPPORT AREA,
THE SAM WARHEAD AREA (50 PERCENT CLOUD COVERED), THE
TROPOSCATTER AND MICROWAVE COMMUNICATIONS FACILITY (50
PERCENT CLOUD SHADOW), THE SAM CHECKOUT AND STORAGE
AREA (95 PERCENT CLOUD COVERED), THE ELECTRONIC TEST
FACILITY, KY AIRFIELD (50 PERCENT SCATTERED CLOUD
COVER), AND THE BASE SUPPORT COMPLEX.

SAM MARSHALLING AREA -- MARSHALLING APRONS 1 THROUGH 6
ARE OCCUPIED BY VEHICLES/PIECES OF EQUIPMENT. A
REDUCTION IN THE NUMBER OF VEHICLES/PIECES OF EQUIPMENT
ON APRON 6 IS APPARENT SINCE MISSION 4037. APRONS 7,
8, AND 9 APPEAR UNOCCUPIED.

SAM TRAINING SITES A AND B -- NO ACTIVITY AND NO
APPARENT CHANGE IN FACILITIES OBSERVED. SAM TRAINING
SITE C IS CLOUD COVERED.

INSTRUMENTATION SITES 1 AND 4-9 CAN BE IDENTIFIED ONLY.
SITE 2 IS CLOUD COVERED AND SITE 3 IS NEARLY OBSCURED

Attachments

Handle Via
TALENT-KEYHOLE
Control System Only

Approved for Release: 2019/01/11 C05105860

~~TOP SECRET CHESS RUFF~~

KH-4 MISSION 1042-1, 17-22 JUNE 1967

TCS-80400-67

ATTACHMENT 1



LAUNCH AREA

TRACKING/GUIDANCE
FACILITY

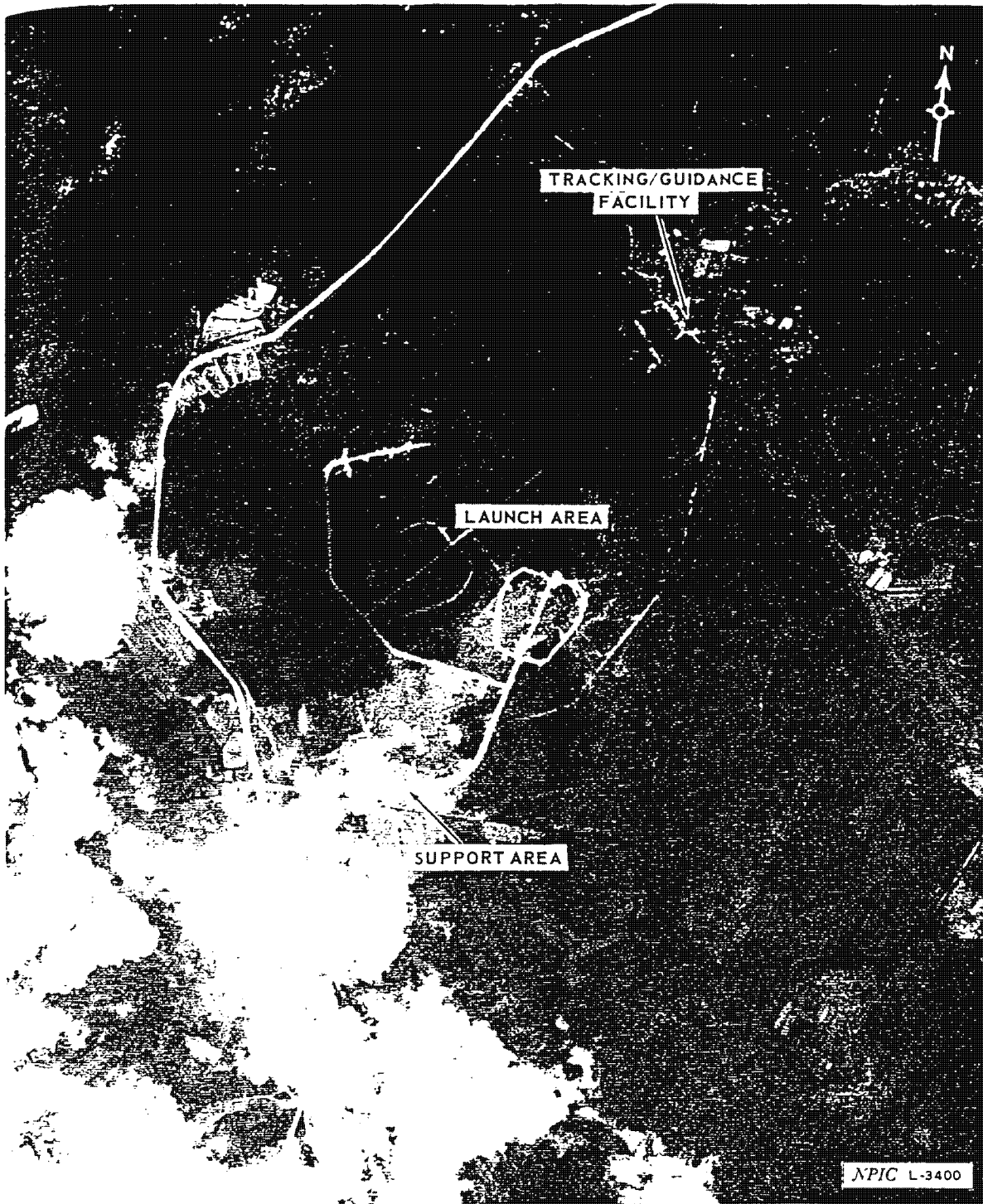
NPIC L-3399

PROBABLE LONG RANGE SAM LAUNCH COMPLEX, KALININGRAD, USSR (MISSILE BONUS)

~~TOP SECRET CHESS RUFF~~

Handle Via
TALENT-KEYHOLE
Control System Only

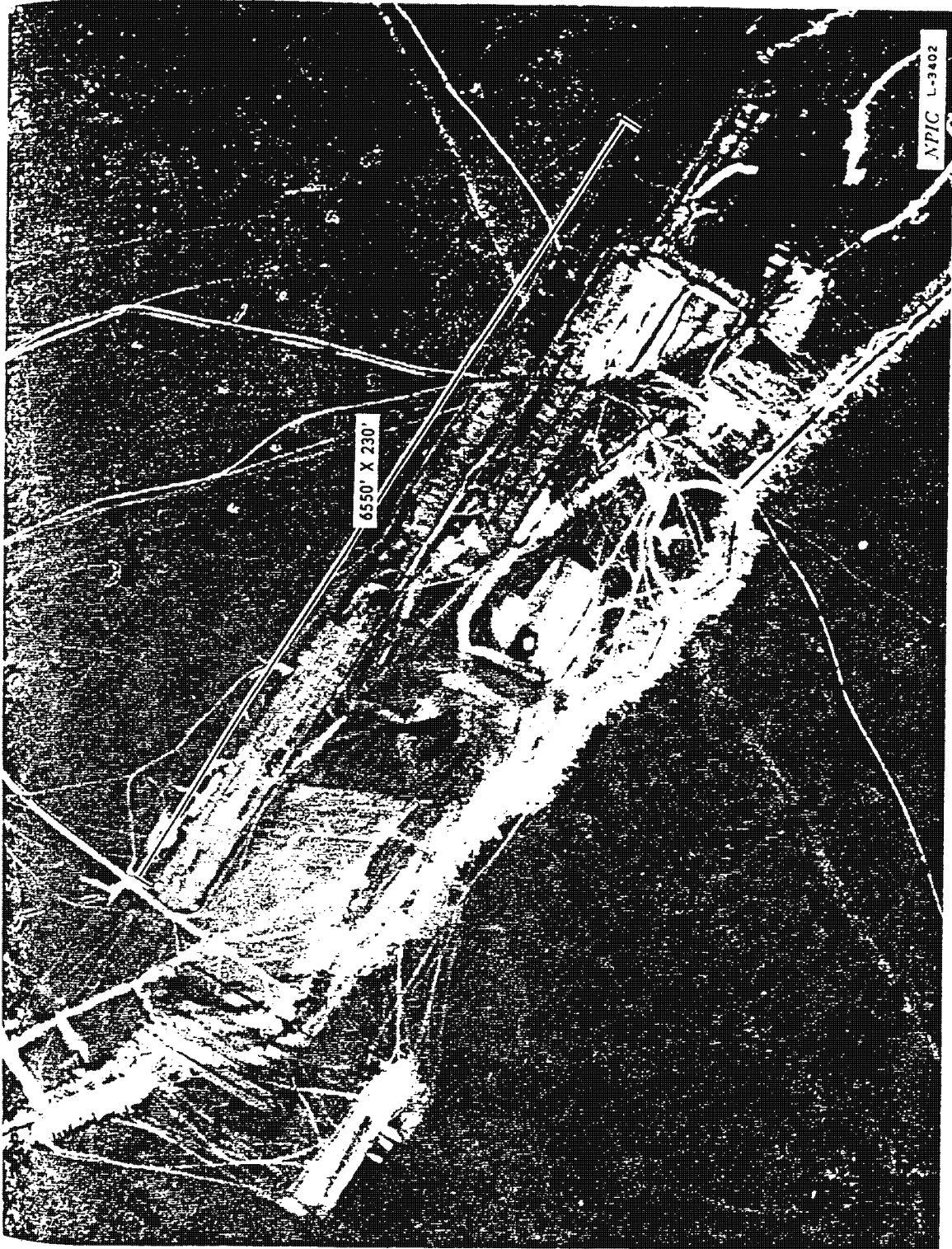
Approved for Release: 2019/01/11 C05105860



PROBABLE LONG RANGE SAM LAUNCH COMPLEX, VENTSPILS, USSR (MISSILE BONUS)

~~TOP SECRET CHESS RUFF~~

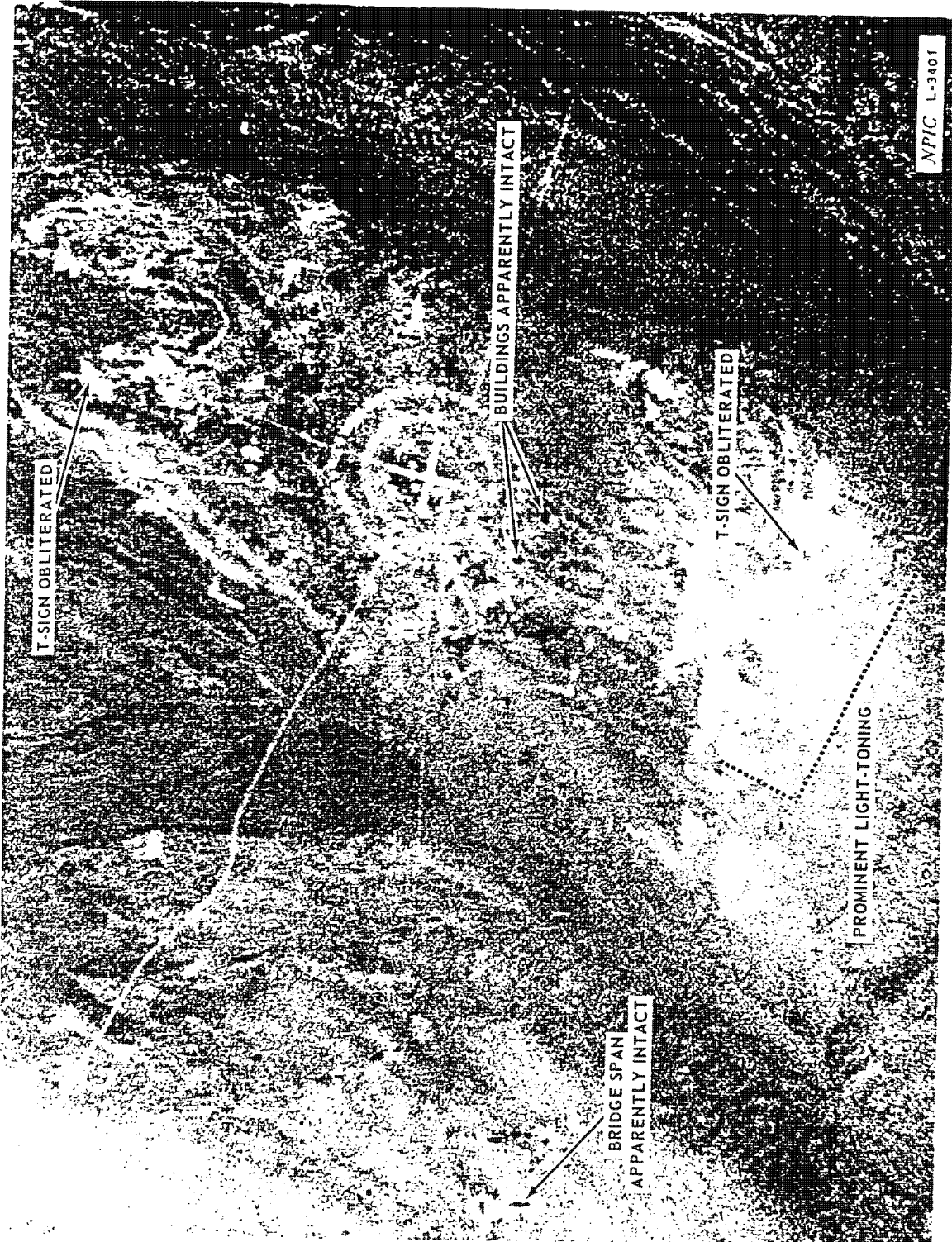
Handle Via
TALENT-KEYHOLE
Control System Only



AIRFIELD UNDER CONSTRUCTION, CHOYBALSAN, MONGOLIA (AIRFIELD BONUS)

~~TOP SECRET CHESS RUFF~~

Handle Via
TALENT-KEYHOLE
Control System Only



GROUND ZERO 2, NUCLEAR TEST SITE, LOP NOR, CHINA (COMOR 3A0002A)

~~TOP SECRET CHESH RUFF~~

Handle Via
TALENT-KEYHOLE
Control System Only